

Rapporti del registratore di temperatura e umidità

Informazioni sul dispositivo

ID dispositivo: 001

Descrizione: DataLoggerCorvarainBadia2023

Informazioni di impostazione

Modalità di avvio: Tasto

Data impostazione: 2024-01-16 15:20:53

Modalità di arresto: Tasto

Intervallo: 1800 S

Ritardo: 0 Min.

Informazioni sui dati

Ora di avvio: 2024-01-22 13:10:10

MAX.: 14.61°C 83.9%

Ora di arresto: 2024-02-10 18:30:55

MIN.: -7.27°C 27.7%

Tempo totale: 19D 5H 30M 0S

MEDIO: 0.97°C 61.9%

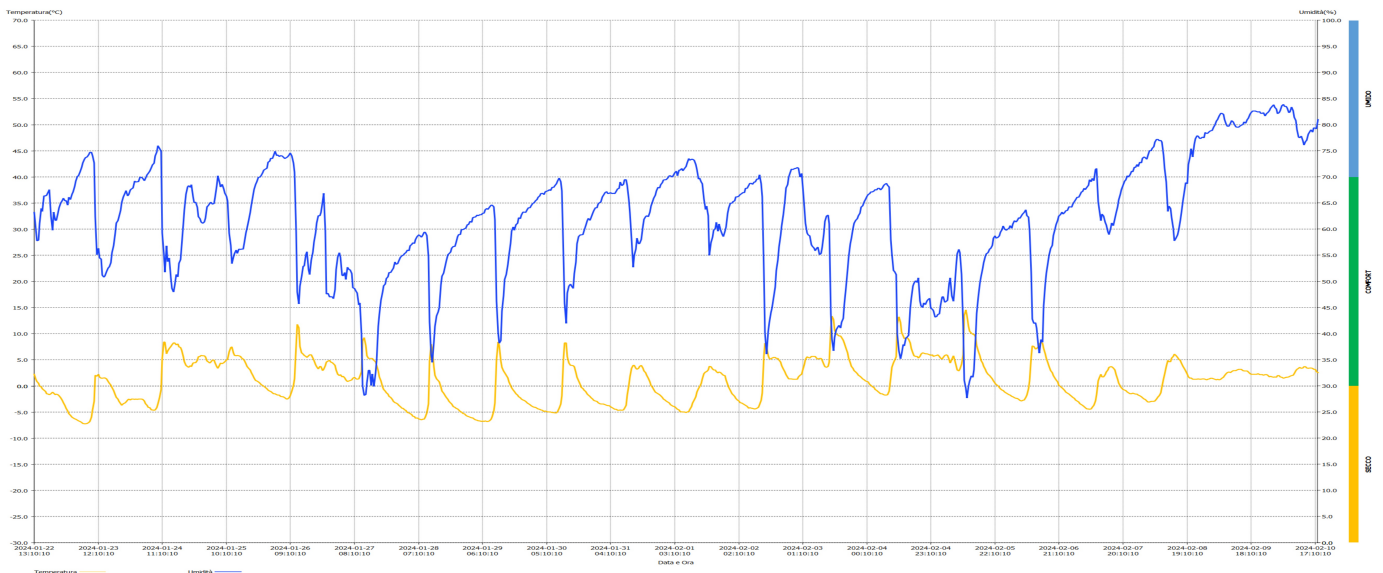
Quantità: 923

MKT: 2.1°C

Seleziona i dati

Informazioni sugli allarmi

	Soglia	Modalità	Ritardo	Durata	Conteggio	Stato
TEMP.	≥ 20°C	Singolo	0 Sec.	0Sec.	0	N
	≤ -20°C	Singolo	0 Sec.	0Sec.	0	N
Umidità	≥ 90%	Singolo	0 Sec.	0Sec.	0	N
	≤ 25%	Singolo	0 Sec.	0Sec.	0	N



umero di allarmi di alta temperatura: 0

nero di allarmi di bassa temperatura: 0

temperatura massima pagina attuale: 11.8°C

Temperatura minima pagina attuale: -7.3°C

Numero di allarmi di alta umidità: 0

umber Of Alarms With Low Humidity: 0

Umidità massima pagina attuale: 76%

Umidità minima pagina attuale: 28.2%

Dati di temperatura e umidità

Data e Ora	°C	RH%	Data e Ora	°C	RH%	Data e Ora	°C	RH%	Data e Ora	°C	RH%	Data e Ora	°C	RH%	Data e Ora	°C	RH%
24/01/22 13:10:10	2.3	63.2	24/01/24 04:10:10	-2.6	69.7	24/01/25 19:10:10	2.6	64.6	24/01/27 10:10:10	1.9	45.9	24/01/29 01:10:10	-5.9	60.9	24/01/30 16:10:10	1.7	57.2
24/01/22 13:40:10	1.3	60.0	24/01/24 04:40:10	-2.9	69.3	24/01/25 19:40:10	2.0	66.4	24/01/27 10:40:10	2.8	39.9	24/01/29 01:40:10	-6.0	61.5	24/01/30 16:40:10	1.0	58.6
24/01/22 14:10:10	0.9	57.8	24/01/24 05:10:10	-3.4	69.7	24/01/25 20:10:10	1.6	67.6	24/01/27 11:10:10	8.7	30.0	24/01/29 02:10:10	-6.1	61.3	24/01/30 17:10:10	0.3	58.9
24/01/22 14:40:10	0.6	57.9	24/01/24 05:40:10	-3.7	70.4	24/01/25 20:40:10	1.1	68.6	24/01/27 11:40:10	9.3	28.2	24/01/29 02:40:10	-6.1	62.2	24/01/30 17:40:10	-0.3	58.9
24/01/22 15:10:10	0.0	61.1	24/01/24 06:10:10	-4.1	70.7	24/01/25 21:10:10	1.0	69.0	24/01/27 12:10:10	7.8	28.4	24/01/29 03:10:10	-6.4	62.3	24/01/30 18:10:10	-0.5	59.0
24/01/22 15:40:10	-0.2	64.0	24/01/24 06:40:10	-4.2	71.1	24/01/25 21:40:10	0.8	69.9	24/01/27 12:40:10	5.8	30.6	24/01/29 03:40:10	-6.5	62.3	24/01/30 18:40:10	-0.8	59.7
24/01/22 16:10:10	-0.6	63.4	24/01/24 07:10:10	-4.6	71.8	24/01/25 22:10:10	0.6	70.0	24/01/27 13:10:10	5.3	33.0	24/01/29 04:10:10	-6.6	62.7	24/01/30 19:10:10	-1.1	60.6
24/01/22 16:40:10	-0.8	66.4	24/01/24 07:40:10	-4.6	72.3	24/01/25 22:40:10	0.3	70.2	24/01/27 13:40:10	5.3	33.0	24/01/29 04:40:10	-6.7	62.6	24/01/30 19:40:10	-1.6	61.6
24/01/22 17:10:10	-1.1	66.4	24/01/24 08:10:10	-4.7	72.6	24/01/25 23:10:10	0.1	70.8	24/01/27 14:10:10	5.3	30.1	24/01/29 05:10:10	-6.7	62.8	24/01/30 20:10:10	-1.8	62.1
24/01/22 17:40:10	-1.5	66.5	24/01/24 08:40:10	-4.6	74.0	24/01/25 23:40:10	0.0	71.3	24/01/27 14:40:10	5.5	32.3	24/01/29 05:40:10	-6.8	62.8	24/01/30 20:40:10	-2.0	61.7
24/01/22 18:10:10	-1.6	67.1	24/01/24 09:10:10	-4.2	74.8	24/01/26 00:10:10	-0.3	71.5	24/01/27 15:10:10	4.9	29.9	24/01/29 06:10:10	-6.7	63.0	24/01/30 21:10:10	-2.3	62.2
24/01/22 18:40:10	-1.7	67.6	24/01/24 09:40:10	-3.5	76.0	24/01/26 00:40:10	-0.6	71.7	24/01/27 15:40:10	4.7	32.4	24/01/29 06:40:10	-6.8	63.1	24/01/30 21:40:10	-2.5	63.0
24/01/22 19:10:10	-1.5	62.5	24/01/24 10:10:10	-2.3	75.5	24/01/26 01:10:10	-0.8	72.8	24/01/27 16:10:10	4.0	34.8	24/01/29 07:10:10	-6.7	63.7	24/01/30 22:10:10	-2.8	63.5
24/01/22 19:40:10	-1.2	59.8	24/01/24 10:40:10	-0.7	74.9	24/01/26 01:40:10	-1.0	73.0	24/01/27 16:40:10	2.9	41.4	24/01/29 07:40:10	-6.8	64.0	24/01/30 22:40:10	-2.9	64.1
24/01/22 20:10:10	-1.4	63.3	24/01/24 11:10:10	5.3	59.3	24/01/26 02:10:10	-1.1	73.6	24/01/27 17:10:10	1.8	43.7	24/01/29 08:10:10	-6.8	63.8	24/01/30 23:10:10	-3.0	64.1
24/01/22 20:40:10	-1.7	61.7	24/01/24 11:40:10	8.5	55.3	24/01/26 02:40:10	-1.3	73.5	24/01/27 17:40:10	1.0	46.4	24/01/29 08:40:10	-6.7	64.2	24/01/30 23:40:10	-3.2	64.8
24/01/22 21:10:10	-1.6	61.7	24/01/24 12:10:10	8.4	51.8	24/01/26 03:10:10	-1.5	74.0	24/01/27 18:10:10	-0.2	47.9	24/01/29 09:10:10	-6.4	64.6	24/01/31 00:10:10	-3.4	65.1
24/01/22 21:40:10	-1.7	63.1	24/01/24 12:40:10	6.2	56.8	24/01/26 03:40:10	-1.5	74.9	24/01/27 18:40:10	-0.7	49.2	24/01/29 09:40:10	-6.5	64.6	24/01/31 00:40:10	-3.5	65.2
24/01/22 22:10:10	-1.9	64.1	24/01/24 13:10:10	6.7	53.8	24/01/26 04:10:10	-1.7	74.1	24/01/27 19:10:10	-1.0	49.5	24/01/29 10:10:10	-4.8	64.3	24/01/31 01:10:10	-3.5	66.2
24/01/22 22:40:10	-2.3	65.0	24/01/24 13:40:10	7.2	54.5	24/01/26 04:40:10	-1.8	74.2	24/01/27 19:40:10	-1.3	50.6	24/01/29 10:40:10	-3.3	61.8	24/01/31 01:40:10	-3.5	66.5
24/01/22 23:10:10	-2.8	65.5	24/01/24 14:10:10	7.6	50.7	24/01/26 05:10:10	-1.8	73.9	24/01/27 20:10:10	-1.6	50.9	24/01/29 11:10:10	5.1	46.2	24/01/31 02:10:10	-3.6	67.0
24/01/22 23:40:10	-3.2	65.9	24/01/24 14:40:10	7.9	48.7	24/01/26 05:40:10	-2.0	74.1	24/01/27 20:40:10	-2.0	51.7	24/01/29 11:40:10	8.5	40.2	24/01/31 02:40:10	-3.7	67.2
24/01/23 00:10:10	-3.8	65.4	24/01/24 15:10:10	8.3	48.0	24/01/26 06:10:10	-2.1	74.0	24/01/27 21:10:10	-2.2	51.7	24/01/29 12:10:10	7.8	38.2	24/01/31 03:10:10	-3.8	66.8
24/01/23 00:40:10	-4.3	65.5	24/01/24 15:40:10	8.3	49.1	24/01/26 06:40:10	-2.1	73.8	24/01/27 21:40:10	-2.6	52.2	24/01/29 12:40:10	4.8	38.7	24/01/31 03:40:10	-3.8	66.9
24/01/23 01:10:10	-4.8	64.6	24/01/24 16:10:10	7.9	51.3	24/01/26 07:10:10	-2.3	73.5	24/01/27 22:10:10	-3.0	52.5	24/01/29 13:10:10	3.6	44.3	24/01/31 04:10:10	-4.0	67.0
24/01/23 01:40:10	-5.3	66.1	24/01/24 16:40:10	8.1	50.9	24/01/26 07:40:10	-2.5	73.7	24/01/27 22:40:10	-3.2	53.7	24/01/29 13:40:10	2.9	47.2	24/01/31 04:40:10	-4.2	66.8
24/01/23 02:10:10	-5.6	65.7	24/01/24 17:10:10	7.5	53.5	24/01/26 08:10:10	-2.5	73.8	24/01/27 23:10:10	-3.3	53.3	24/01/29 14:10:10	2.6	50.4	24/01/31 05:10:10	-4.3	66.9
24/01/23 02:40:10	-6.0	66.7	24/01/24 17:40:10	7.4	54.2	24/01/26 08:40:10	-2.3	74.2	24/01/27 23:40:10	-3.5	53.4	24/01/29 14:40:10	2.1	51.3	24/01/31 05:40:10	-4.5	66.8
24/01/23 03:10:10	-6.1	67.1	24/01/24 18:10:10	6.9	56.8	24/01/26 09:10:10	-1.9	74.6	24/01/28 00:10:10	-3.7	53.9	24/01/29 15:10:10	1.6	53.2	24/01/31 06:10:10	-4.5	67.3
24/01/23 03:40:10	-6.3	68.2	24/01/24 18:40:10	5.7	60.9	24/01/26 09:40:10	-1.0	74.0	24/01/28 00:40:10	-4.0	54.6	24/01/29 15:40:10	0.8	55.0	24/01/31 06:40:10	-4.7	67.7
24/01/23 04:10:10	-6.4	69.2	24/01/24 19:10:10	4.7	63.7	24/01/26 10:10:10	0.1	72.7	24/01/28 01:10:10	-4.3	54.9	24/01/29 16:10:10	0.1	57.3	24/01/31 07:10:10	-4.7	67.8
24/01/23 04:40:10	-6.6	70.1	24/01/24 19:40:10	4.0	66.7	24/01/26 10:40:10	1.4	70.9	24/01/28 01:40:10	-4.3	55.0	24/01/29 16:40:10	-0.4	59.7	24/01/31 07:40:10	-4.6	69.0
24/01/23 05:10:10	-6.7	70.2	24/01/24 20:10:10	3.7	68.1	24/01/26 11:10:10	7.8	59.5	24/01/28 02:10:10	-4.6	55.4	24/01/29 17:10:10	-0.8	60.4	24/01/31 08:10:10	-4.7	68.3
24/01/23 05:40:10	-6.8	71.0	24/01/24 20:40:10	3.6	68.3	24/01/26 11:40:10	11.8	48.0	24/01/28 02:40:10	-4.7	55.5	24/01/29 17:40:10	-1.1	59.8	24/01/31 08:40:10	-4.6	68.6
24/01/23 06:10:10	-7.0	71.9	24/01/24 21:10:10	3.9	68.0	24/01/26 12:10:10	11.2	45.7	24/01/28 03:10:10	-5.1	56.0	24/01/29 18:10:10	-1.5	60.9	24/01/31 09:10:10	-4.3	69.5
24/01/23 06:40:10	-7.2	72.7	24/01/24 21:40:10	3.7	68.5	24/01/26 12:40:10	7.6	49.1	24/01/28 03:40:10	-5.2	55.9	24/01/29 18:40:10	-1.8	61.1	24/01/31 09:40:10	-3.7	69.5
24/01/23 07:10:10	-7.3	73.4	24/01/24 22:10:10	4.4	66.3	24/01/26 13:10:10	6.4	50.8	24/01/28 04:10:10	-5.3	56.8	24/01/29 19:10:10	-2.1	62.2	24/01/31 10:10:10	-1.8	68.3
24/01/23 07:40:10	-7.3	73.7	24/01/24 22:40:10	4.5	65.1	24/01/26 13:40:10	6.1	52.9	24/01/28 04:40:10	-5.5	57.1	24/01/29 19:40:10	-2.3	62.0	24/01/31 10:40:10	0.2	65.6
24/01/23 08:10:10	-7.2	73.8	24/01/24 23:10:10	4.5	65.2	24/01/26 14:10:10	5.9	53.0	24/01/28 05:10:10	-5.8	57.4	24/01/29 20:10:10	-2.5	62.7	24/01/31 11:10:10	1.8	63.1
24/01/23 08:40:10	-7.0	74.3	24/01/24 23:40:10	4.9	64.2	24/01/26 14:40:10	5.7	55.1	24/01/28 05:40:10	-5.9	57.3	24/01/29 20:40:10	-2.7	63.3	24/01/31 11:40:10	3.4	58.1
24/01/23 09:10:10	-6.8	74.7	24/01/25 00:10:10	5.6	62.4	24/01/26 15:10:10	5.5	55.7	24/01/28 06:10:10	-6.2	58.0	24/01/29 21:10:10	-2.8	63.3	24/01/31 12:10:10	4.0	52.7
24/01/23 09:40:10	-6.0	74.7	24/01/25 00:40:10	5.7	62.0	24/01/26 15:40:10	5.8	52.2	24/01/28 06:40:10	-6.1	58.6	24/01/29 21:40:10	-3.0	63.2	24/01/31 12:40:10	4.0	55.0
24/01/23 10:10:10	-4.6	74.1	24/01/25 01:10:10	5.9	61.4	24/01/26 16:10:10	6.0	51.3	24/01/28 07:10:10	-6.3	58.9	24/01/29 22:10:10	-3.3	63.8	24/01/31 13:10:10	3.4	56.2
24/01/23 10:40:10	-3.0	72.7	24/01/25 01:40:10	5.8	61.1	24/01/26 16:40:10	6.0	54.1	24/01/28 07:40:10	-6.4	58.8	24/01/29 22:40:10	-3.4	64.1	24/01/31 13:40:10	3.2	58.3
24/01/23 11:10:10	2.1	62.4	24/01/25 02:10:10	5.8	61.4	24/01/26 17:10:10	5.4	55.6	24/01/28 08:10:10	-6.5	58.5	24/01/29 23:10:10	-3.6	64.1	24/01/31 14:10:10	3.4	57.2
24/01/23 11:40:10	1.9	55.1	24/01/25 02:40:10	5.6	62.1	24/01/26 17:40:10	4.9	57.5	24/01/28 08:40:10	-6.4	58.8	24/01/29 23:40:10	-3.8	64.5	24/01/31 14:40:10	3.8	57.3
24/01/23 12:10:10	2.3	56.3	24/01/25 03:10:10	4.8	64.3	24/01/26 18:10:10	4.1	59.3	24/01/28 09:10:10	-6.4	59.4	24/01/30 00:10:10	-4.0	64.9	24/01/31 15:10:10	4.0	58.0
24/01/23 12:40:10	1.7	54.5	24/01/25 03:40:10	4.7	64.5	24/01/26 18:40:10	3.7	61.2	24/01/28 09:40:10	-6.0	59.4	24/01/30 00:40:10	-4.1	65.1	24/01/31 15:40:10	3.5	60.5
24/01/23 13:10:10	1.5	54.3	24/01/25 04:10:10	4.4	64.9	24/01/26 19:10:10	3.3	62.6	24/01/28 10:10:10	-5.2	58.8	24/01/30 01:10:10	-4.1	65.4	24/01/31 16:10		

Ora di avvio pagina attuale: 2024-02-01 07:10:10
 umero di allarmi di alta temperatura: 0
 temperatura massima pagina attuale: 14.6°C
 Numero di allarmi di alta umidità: 0
 Umidità massima pagina attuale: 83.9%

Ora di arresto pagina attuale: 2024-02-10 18:10:10
 nero di allarmi di bassa temperatura: 0
 Temperatura minima pagina attuale: -5.1°C
 umber Of Alarms With Low Humidity: 0
 Umidità minima pagina attuale: 27.7%

Dati di temperatura e umidità

Data e Ora	°C	RH%	Data e Ora	°C	RH%	Data e Ora	°C	RH%	Data e Ora	°C	RH%	Data e Ora	°C	RH%	Data e Ora	°C	RH%
24/02/01 07:10:10	-5.1	72.0	24/02/02 22:10:10	1.3	71.6	24/02/04 13:10:10	9.6	37.9	24/02/06 04:10:10	-2.0	60.2	24/02/07 19:10:10	0.0	66.7	24/02/09 10:10:10	2.7	79.7
24/02/01 07:40:10	-5.0	72.7	24/02/02 22:40:10	1.3	71.6	24/02/04 13:40:10	9.1	37.7	24/02/06 04:40:10	-2.1	61.0	24/02/07 19:40:10	-0.4	67.6	24/02/09 10:40:10	2.6	80.3
24/02/01 08:10:10	-4.9	73.5	24/02/02 23:10:10	1.3	71.8	24/02/04 14:10:10	9.2	39.2	24/02/06 05:10:10	-2.3	61.6	24/02/07 20:10:10	-0.7	68.4	24/02/09 11:10:10	2.8	80.8
24/02/01 08:40:10	-4.5	73.2	24/02/02 23:40:10	1.8	71.7	24/02/04 14:40:10	9.3	39.3	24/02/06 05:40:10	-2.4	61.4	24/02/07 20:40:10	-0.8	69.2	24/02/09 11:40:10	3.0	80.5
24/02/01 09:10:10	-4.0	73.4	24/02/03 00:10:10	2.1	70.0	24/02/04 15:10:10	9.0	39.7	24/02/06 06:10:10	-2.4	61.6	24/02/07 21:10:10	-0.9	69.4	24/02/09 12:10:10	3.0	80.1
24/02/01 09:40:10	-3.3	73.4	24/02/03 00:40:10	2.3	70.7	24/02/04 15:40:10	8.3	44.8	24/02/06 06:40:10	-2.6	62.2	24/02/07 21:40:10	-1.4	71.0	24/02/09 12:40:10	3.0	79.6
24/02/01 10:10:10	-2.7	73.2	24/02/03 01:10:10	3.1	68.2	24/02/04 16:10:10	7.2	46.8	24/02/06 07:10:10	-2.8	62.1	24/02/07 22:10:10	-1.3	70.0	24/02/09 13:10:10	3.1	79.5
24/02/01 10:40:10	-2.1	72.4	24/02/03 01:40:10	4.2	64.1	24/02/04 16:40:10	6.3	49.1	24/02/06 07:40:10	-2.9	62.6	24/02/07 22:40:10	-1.5	70.4	24/02/09 13:40:10	3.2	79.5
24/02/01 11:10:10	-1.2	71.4	24/02/03 02:10:10	5.1	61.1	24/02/04 17:10:10	5.8	49.7	24/02/06 08:10:10	-2.8	62.9	24/02/07 23:10:10	-1.5	71.1	24/02/09 14:10:10	3.2	79.8
24/02/01 11:40:10	-0.5	69.6	24/02/03 02:40:10	5.6	59.3	24/02/04 17:40:10	5.7	50.1	24/02/06 08:40:10	-2.7	63.2	24/02/07 23:40:10	-1.4	71.0	24/02/09 14:40:10	3.2	79.9
24/02/01 12:10:10	-0.2	69.8	24/02/03 03:10:10	5.5	58.9	24/02/04 18:10:10	5.7	49.8	24/02/06 09:10:10	-2.2	63.7	24/02/08 00:10:10	-1.5	71.9	24/02/09 15:10:10	3.0	80.0
24/02/01 12:40:10	0.5	69.0	24/02/03 03:40:10	5.4	58.7	24/02/04 18:40:10	5.4	50.7	24/02/06 09:40:10	-1.8	62.6	24/02/08 00:40:10	-1.6	71.8	24/02/09 15:40:10	2.9	80.5
24/02/01 13:10:10	1.4	68.7	24/02/03 04:10:10	5.7	57.0	24/02/04 19:10:10	5.7	46.3	24/02/06 10:10:10	-0.6	62.3	24/02/08 01:10:10	-1.6	72.4	24/02/09 16:10:10	2.9	80.3
24/02/01 13:40:10	2.4	65.8	24/02/03 04:40:10	5.7	56.7	24/02/04 19:40:10	6.1	45.3	24/02/06 10:40:10	1.0	59.8	24/02/08 01:40:10	-1.8	72.0	24/02/09 16:40:10	2.9	81.0
24/02/01 14:10:10	2.7	63.8	24/02/03 05:10:10	5.7	56.4	24/02/04 20:10:10	6.4	45.0	24/02/06 11:10:10	5.6	51.7	24/02/08 02:10:10	-1.9	72.8	24/02/09 17:10:10	2.7	81.2
24/02/01 14:40:10	2.8	64.4	24/02/03 05:40:10	5.7	55.9	24/02/04 20:40:10	6.3	45.9	24/02/06 11:40:10	7.7	42.8	24/02/08 02:40:10	-2.1	72.7	24/02/09 17:40:10	2.4	82.0
24/02/01 15:10:10	3.1	62.6	24/02/03 06:10:10	5.3	56.4	24/02/04 21:10:10	6.2	45.6	24/02/06 12:10:10	7.6	42.0	24/02/08 03:10:10	-2.3	73.6	24/02/09 18:10:10	2.3	82.3
24/02/01 15:40:10	3.8	55.0	24/02/03 06:40:10	5.2	56.6	24/02/04 21:40:10	6.2	46.3	24/02/06 12:40:10	7.1	42.1	24/02/08 03:40:10	-1.7	74.1	24/02/09 18:40:10	2.3	82.6
24/02/01 16:10:10	3.7	57.4	24/02/03 07:10:10	5.3	55.1	24/02/04 22:10:10	6.1	46.5	24/02/06 13:10:10	7.2	41.1	24/02/08 04:10:10	-2.6	73.7	24/02/09 19:10:10	2.3	82.6
24/02/01 16:40:10	3.3	58.5	24/02/03 07:40:10	5.3	55.4	24/02/04 22:40:10	6.0	46.8	24/02/06 13:40:10	7.5	37.8	24/02/08 04:40:10	-2.9	73.4	24/02/09 19:40:10	2.3	82.6
24/02/01 17:10:10	3.1	59.8	24/02/03 08:10:10	4.9	56.6	24/02/04 23:10:10	5.9	44.9	24/02/06 14:10:10	8.1	36.3	24/02/08 05:10:10	-3.1	74.1	24/02/09 20:10:10	2.3	82.5
24/02/01 17:40:10	3.1	60.1	24/02/03 08:40:10	4.2	59.1	24/02/04 23:40:10	6.0	44.7	24/02/06 14:40:10	8.4	38.9	24/02/08 05:40:10	-3.1	75.0	24/02/09 20:40:10	2.4	82.4
24/02/01 18:10:10	2.8	61.3	24/02/03 09:10:10	3.7	61.5	24/02/05 00:10:10	5.7	44.4	24/02/06 15:10:10	8.2	38.4	24/02/08 06:10:10	-3.0	75.0	24/02/09 21:10:10	2.2	82.5
24/02/01 18:40:10	2.5	59.6	24/02/03 09:40:10	3.6	62.5	24/02/05 00:40:10	5.8	43.2	24/02/06 15:40:10	7.2	45.3	24/02/08 06:40:10	-3.0	75.5	24/02/09 21:40:10	2.2	82.2
24/02/01 19:10:10	2.7	61.0	24/02/03 10:10:10	3.8	62.7	24/02/05 01:10:10	5.9	43.3	24/02/06 16:10:10	6.2	49.5	24/02/08 07:10:10	-3.0	75.8	24/02/09 22:10:10	2.2	82.2
24/02/01 19:40:10	2.6	59.8	24/02/03 10:40:10	4.6	61.0	24/02/05 01:40:10	6.0	43.7	24/02/06 16:40:10	5.3	51.6	24/02/08 07:40:10	-2.9	76.7	24/02/09 22:40:10	2.1	82.3
24/02/01 20:10:10	2.3	59.0	24/02/03 11:10:10	11.1	43.9	24/02/05 02:10:10	5.7	43.8	24/02/06 17:10:10	4.4	53.6	24/02/08 08:10:10	-2.5	77.2	24/02/09 23:10:10	2.2	81.7
24/02/01 20:40:10	2.1	58.6	24/02/03 11:40:10	13.4	39.0	24/02/05 02:40:10	5.4	45.4	24/02/06 17:40:10	3.8	55.0	24/02/08 08:40:10	-2.1	77.2	24/02/09 23:40:10	2.2	82.2
24/02/01 21:10:10	2.0	59.6	24/02/03 12:10:10	12.8	36.7	24/02/05 03:10:10	5.2	47.0	24/02/06 18:10:10	3.0	56.3	24/02/08 09:10:10	-1.9	76.9	24/02/10 00:10:10	2.1	82.3
24/02/01 21:40:10	1.2	60.4	24/02/03 12:40:10	10.7	39.3	24/02/05 03:40:10	5.5	47.1	24/02/06 18:40:10	2.6	56.9	24/02/08 09:40:10	-1.3	77.0	24/02/10 00:40:10	1.8	82.7
24/02/01 22:10:10	0.3	63.1	24/02/03 13:10:10	10.0	40.8	24/02/05 04:10:10	5.9	46.0	24/02/06 19:10:10	2.0	58.8	24/02/08 10:10:10	-0.2	76.7	24/02/10 01:10:10	1.9	83.1
24/02/01 22:40:10	-0.3	64.1	24/02/03 13:40:10	9.8	41.3	24/02/05 04:40:10	6.0	46.2	24/02/06 19:40:10	1.5	60.0	24/02/08 10:40:10	1.4	74.2	24/02/10 01:40:10	1.8	83.5
24/02/01 23:10:10	-0.9	65.0	24/02/03 14:10:10	9.6	41.6	24/02/05 05:10:10	5.9	46.4	24/02/06 20:10:10	1.2	61.0	24/02/08 11:10:10	2.3	71.6	24/02/10 02:10:10	1.7	83.8
24/02/01 23:40:10	-1.5	65.0	24/02/03 14:40:10	9.6	41.1	24/02/05 05:40:10	5.1	49.6	24/02/06 20:40:10	0.8	61.7	24/02/08 11:40:10	3.7	69.0	24/02/10 02:40:10	1.8	83.3
24/02/02 00:10:10	-1.7	65.3	24/02/03 15:10:10	9.3	42.2	24/02/05 06:10:10	4.4	50.7	24/02/06 21:10:10	0.2	62.5	24/02/08 12:10:10	4.9	63.4	24/02/10 03:10:10	1.7	83.0
24/02/02 00:40:10	-2.0	65.4	24/02/03 15:40:10	8.8	42.9	24/02/05 06:40:10	5.1	47.2	24/02/06 21:40:10	-0.1	62.8	24/02/08 12:40:10	4.7	64.4	24/02/10 03:40:10	2.0	82.1
24/02/02 01:10:10	-2.4	66.2	24/02/03 16:10:10	8.2	45.7	24/02/05 07:10:10	5.8	46.2	24/02/06 22:10:10	-0.4	63.3	24/02/08 13:10:10	4.7	64.0	24/02/10 04:10:10	2.0	82.3
24/02/02 01:40:10	-2.7	66.2	24/02/03 16:40:10	7.3	48.8	24/02/05 07:40:10	5.1	48.5	24/02/06 22:40:10	-0.6	62.9	24/02/08 13:40:10	5.4	62.2	24/02/10 04:40:10	1.8	82.7
24/02/02 02:10:10	-2.9	66.4	24/02/03 17:10:10	6.4	52.2	24/02/05 08:10:10	3.9	53.0	24/02/06 23:10:10	-0.9	63.2	24/02/08 14:10:10	5.7	60.2	24/02/10 05:10:10	1.7	83.6
24/02/02 02:40:10	-3.2	66.6	24/02/03 17:40:10	5.3	54.7	24/02/05 08:40:10	3.1	55.3	24/02/06 23:40:10	-1.2	63.5	24/02/08 14:40:10	6.1	57.8	24/02/10 05:40:10	1.5	83.9
24/02/02 03:10:10	-3.3	66.8	24/02/03 18:10:10	4.5	57.2	24/02/05 09:10:10	2.9	56.1	24/02/07 00:10:10	-1.4	63.6	24/02/08 15:10:10	5.9	58.3	24/02/10 06:10:10	1.6	83.5
24/02/02 03:40:10	-3.4	67.0	24/02/03 18:40:10	3.8	58.2	24/02/05 09:40:10	3.3	55.5	24/02/07 00:40:10	-1.6	64.3	24/02/08 15:40:10	5.5	58.9	24/02/10 06:40:10	1.7	83.5
24/02/02 04:10:10	-3.6	67.0	24/02/03 19:10:10	3.4	60.1	24/02/05 10:10:10	4.2	51.4	24/02/07 01:10:10	-1.8	64.3	24/02/08 16:10:10	5.2	59.8	24/02/10 07:10:10	1.7	83.2
24/02/02 04:40:10	-3.7	67.8	24/02/03 19:40:10	3.0	61.1	24/02/05 10:40:10	6.0	41.7	24/02/07 01:40:10	-2.0	64.2	24/02/08 16:40:10	4.9	61.6	24/02/10 07:40:10	1.8	82.3
24/02/02 05:10:10	-3.9	67.8	24/02/03 20:10:10	2.7	61.7	24/02/05 11:10:10	13.5	31.1	24/02/07 02:10:10	-2.2	64.8	24/02/08 17:10:10	4.4	63.7	24/02/10 08:10:10	1.9	82.4
24/02/02 05:40:10	-4.3	68.4	24/02/03 20:40:10	2.4	62.0	24/02/05 11:40:10	14.6	29.5	24/02/07 02:40:10	-2.4	65.3	24/02/08 17:40:10	3.8	65.5	24/02/10 08:40:10	2.0	83.4
24/02/02 06:10:10	-4.2	68.8	24/02/03 21:10:10	2.1	62.6	24/02/05 12:10:10	13.5	27.7	24/02/07 03:10:10	-2.7	65.6	24/02/08 18:10:10	3.3	67.5	24/02/10 09:10:10	2.1	82.7
24/02/02 06:40:10	-4.3	68.8	24/02/03 21:40:10	1.9	63.1	24/02/05 12:40:10	11.4	30.0	24/02/07 03:40:10	-2.9	66.1	24/02/08 18:40:10	2.9	68.9	24/02/10 09:40:10	2.4	81.4
24/02/02 07:10:10	-4.3	68.6	24/02/03 22:10:10	1.7	64.2	24/02/05 13:10:10	10.5	31.0	24/02/07 04:10:10	-3.1	66.1	24/02/08 19:10:10	2.3	68.7	24/02/10 10:10:10	3.0	80.8
24/02/02 07:40:10	-4.4	69.0	24/02/03 22:40:10	1.4	64.5	24/02/05 13:40:10	10.2	31.9	24/02/07 04:40:10	-3.4	66.5	24/02/08 19:40:10					