

Rapporti del registratore di temperatura e umidità

Informazioni sul dispositivo

ID dispositivo: 001

Descrizione: DataLoggerCorvarainBadia2023

Informazioni di impostazione

Modalità di avvio: Tasto

Data di impostazione: 2024-01-16 15:20:53

Modalità di arresto: Tasto

Intervallo: 1800 S

Ritardo: 0 Min.

Informazioni sui dati

Ora di avvio: 2024-01-19 16:50:24

MAX.: 2.93°C 78.7%

Ora di arresto: 2024-01-22 12:21:12

MIN.: -15.56°C 46.6%

Tempo totale: 2D 20H 0M 0S

MEDIO: -10.12°C 70.6%

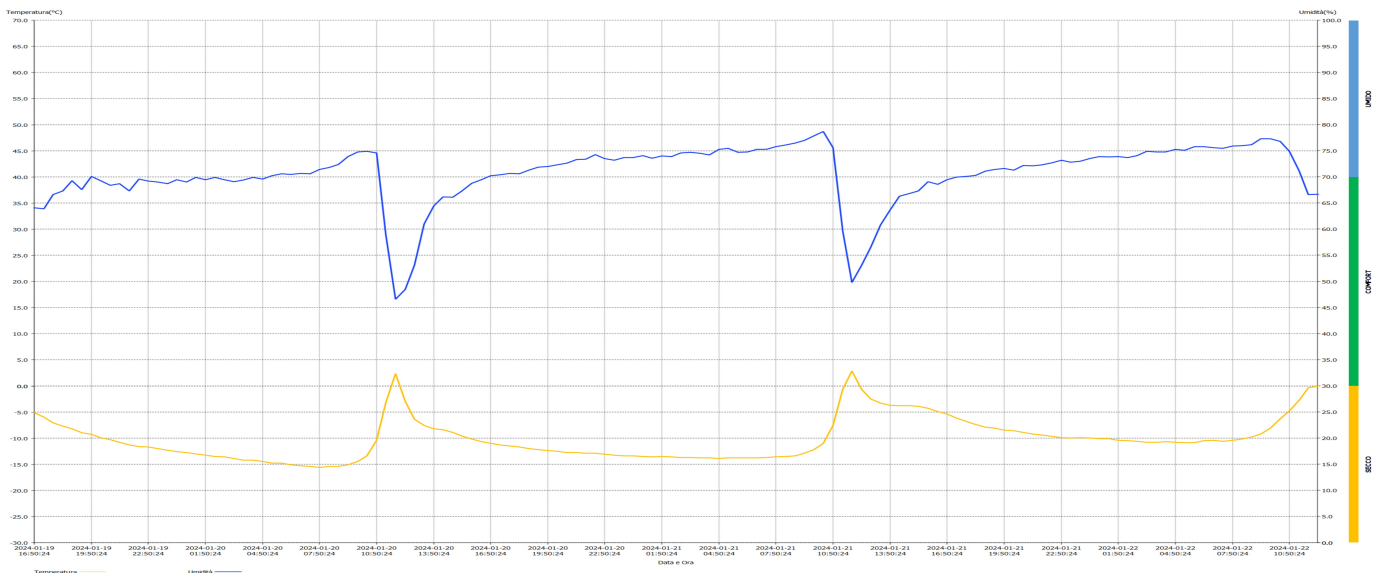
Quantità: 136

MKT: -8.8°C

Seleziona i dati

Informazioni sugli allarmi

	Soglia	Modalità	Ritardo	Durata	Conteggio	Stato
TEMP.	$\geq 20^{\circ}\text{C}$	Singolo	0 Sec.	0Sec.	0	N
	$\leq -20^{\circ}\text{C}$	Singolo	0 Sec.	0Sec.	0	N
Umidità	$\geq 90\%$	Singolo	0 Sec.	0Sec.	0	N
	$\leq 25\%$	Singolo	0 Sec.	0Sec.	0	N



Ora di avvio pagina attuale: 2024-01-19 16:50:24
 umero di allarmi di alta temperatura: 0
 temperatura massima pagina attuale: 2.9°C
 Numero di allarmi di alta umidità: 0
 Umidità massima pagina attuale: 78.7%

Ora di arresto pagina attuale: 2024-01-22 12:20:24
 nero di allarmi di bassa temperatura: 0
 Temperatura minima pagina attuale: -15.6°C
 umber Of Alarms With Low Humidity: 0
 Umidità minima pagina attuale: 46.6%

Dati di temperatura e umidità

Data e Ora	°C	RH%	Data e Ora	°C	RH%	Data e Ora	°C	RH%	Data e Ora	°C	RH%	Data e Ora	°C	RH%
24/01/19 16:50:24	-5.1	64.1	24/01/21 07:50:24	-13.6	75.8									
24/01/19 17:20:24	-6.0	63.9	24/01/21 08:20:24	-13.5	76.1									
24/01/19 17:50:24	-7.1	66.6	24/01/21 08:50:24	-13.4	76.5									
24/01/19 18:20:24	-7.7	67.3	24/01/21 09:20:24	-12.9	77.0									
24/01/19 18:50:24	-8.2	69.3	24/01/21 09:50:24	-12.2	77.9									
24/01/19 19:20:24	-9.0	67.6	24/01/21 10:20:24	-11.0	78.7									
24/01/19 19:50:24	-9.3	70.1	24/01/21 10:50:24	-7.6	75.6									
24/01/19 20:20:24	-9.9	69.3	24/01/21 11:20:24	-0.7	59.7									
24/01/19 20:50:24	-10.3	68.4	24/01/21 11:50:24	2.9	49.8									
24/01/19 21:20:24	-10.8	68.7	24/01/21 12:20:24	-0.7	53.1									
24/01/19 21:50:24	-11.3	67.3	24/01/21 12:50:24	-2.5	56.6									
24/01/19 22:20:24	-11.6	69.6	24/01/21 13:20:24	-3.3	60.8									
24/01/19 22:50:24	-11.7	69.2	24/01/21 13:50:24	-3.7	63.7									
24/01/19 23:20:24	-12.0	69.0	24/01/21 14:20:24	-3.8	66.3									
24/01/19 23:50:24	-12.3	68.7	24/01/21 14:50:24	-3.8	66.8									
24/01/20 00:20:24	-12.6	69.5	24/01/21 15:20:24	-3.9	67.3									
24/01/20 00:50:24	-12.8	69.0	24/01/21 15:50:24	-4.3	69.1									
24/01/20 01:20:24	-13.0	69.9	24/01/21 16:20:24	-4.9	68.6									
24/01/20 01:50:24	-13.3	69.5	24/01/21 16:50:24	-5.4	69.5									
24/01/20 02:20:24	-13.5	69.9	24/01/21 17:20:24	-6.2	70.0									
24/01/20 02:50:24	-13.6	69.5	24/01/21 17:50:24	-6.8	70.1									
24/01/20 03:20:24	-13.9	69.1	24/01/21 18:20:24	-7.4	70.3									
24/01/20 03:50:24	-14.2	69.4	24/01/21 18:50:24	-7.9	71.1									
24/01/20 04:20:24	-14.2	69.9	24/01/21 19:20:24	-8.1	71.4									
24/01/20 04:50:24	-14.5	69.6	24/01/21 19:50:24	-8.5	71.6									
24/01/20 05:20:24	-14.8	70.2	24/01/21 20:20:24	-8.6	71.3									
24/01/20 05:50:24	-14.8	70.6	24/01/21 20:50:24	-8.9	72.2									
24/01/20 06:20:24	-15.1	70.5	24/01/21 21:20:24	-9.2	72.1									
24/01/20 06:50:24	-15.3	70.7	24/01/21 21:50:24	-9.4	72.3									
24/01/20 07:20:24	-15.4	70.6	24/01/21 22:20:24	-9.7	72.7									
24/01/20 07:50:24	-15.6	71.4	24/01/21 22:50:24	-9.9	73.2									
24/01/20 08:20:24	-15.4	71.8	24/01/21 23:20:24	-10.0	72.8									
24/01/20 08:50:24	-15.4	72.4	24/01/21 23:50:24	-9.9	73.0									
24/01/20 09:20:24	-15.1	73.9	24/01/22 00:20:24	-10.0	73.5									
24/01/20 09:50:24	-14.5	74.8	24/01/22 00:50:24	-10.1	73.9									
24/01/20 10:20:24	-13.4	74.9	24/01/22 01:20:24	-10.1	73.8									
24/01/20 10:50:24	-10.4	74.6	24/01/22 01:50:24	-10.4	73.9									
24/01/20 11:20:24	-3.2	59.0	24/01/22 02:20:24	-10.5	73.7									
24/01/20 11:50:24	2.4	46.6	24/01/22 02:50:24	-10.6	74.1									
24/01/20 12:20:24	-3.0	48.5	24/01/22 03:20:24	-10.8	74.9									
24/01/20 12:50:24	-6.4	53.1	24/01/22 03:50:24	-10.8	74.8									
24/01/20 13:20:24	-7.6	61.0	24/01/22 04:20:24	-10.7	74.8									
24/01/20 13:50:24	-8.2	64.5	24/01/22 04:50:24	-10.8	75.3									
24/01/20 14:20:24	-8.4	66.2	24/01/22 05:20:24	-10.9	75.1									
24/01/20 14:50:24	-8.9	66.1	24/01/22 05:50:24	-10.9	75.8									
24/01/20 15:20:24	-9.6	67.3	24/01/22 06:20:24	-10.5	75.8									
24/01/20 15:50:24	-10.2	68.8	24/01/22 06:50:24	-10.4	75.6									
24/01/20 16:20:24	-10.7	69.5	24/01/22 07:20:24	-10.6	75.5									
24/01/20 16:50:24	-11.0	70.2	24/01/22 07:50:24	-10.4	75.9									
24/01/20 17:20:24	-11.3	70.4	24/01/22 08:20:24	-10.2	76.0									
24/01/20 17:50:24	-11.5	70.7	24/01/22 08:50:24	-9.8	76.2									
24/01/20 18:20:24	-11.7	70.6	24/01/22 09:20:24	-9.2	77.3									
24/01/20 18:50:24	-12.0	71.3	24/01/22 09:50:24	-8.1	77.3									
24/01/20 19:20:24	-12.2	71.9	24/01/22 10:20:24	-6.3	76.8									
24/01/20 19:50:24	-12.4	72.0	24/01/22 10:50:24	-4.8	74.9									
24/01/20 20:20:24	-12.5	72.3	24/01/22 11:20:24	-2.8	71.2									
24/01/20 20:50:24	-12.8	72.6	24/01/22 11:50:24	-0.4	66.6									
24/01/20 21:20:24	-12.8	73.3	24/01/22 12:20:24	0.0	66.7									
24/01/20 21:50:24	-12.9	73.4												
24/01/20 22:20:24	-12.9	74.3												
24/01/20 22:50:24	-13.1	73.5												
24/01/20 23:20:24	-13.3	73.2												
24/01/20 23:50:24	-13.4	73.7												
24/01/21 00:20:24	-13.4	73.7												
24/01/21 00:50:24	-13.5	74.1												
24/01/21 01:20:24	-13.6	73.6												
24/01/21 01:50:24	-13.5	74.0												
24/01/21 02:20:24	-13.6	73.9												
24/01/21 02:50:24	-13.7	74.6												
24/01/21 03:20:24	-13.7	74.7												
24/01/21 03:50:24	-13.8	74.5												
24/01/21 04:20:24	-13.8	74.2												
24/01/21 04:50:24	-13.9	75.3												
24/01/21 05:20:24	-13.8	75.5												
24/01/21 05:50:24	-13.8	74.7												
24/01/21 06:20:24	-13.8	74.8												
24/01/21 06:50:24	-13.8	75.3												
24/01/21 07:20:24	-13.7	75.3												